



EAST SIDE MONTHLY NEWS

57156 CR 13 - Elkhart IN 46516
PH: 574.875.8517 FX: 574.875.5985
concord.k12.in.us/east-side-elementary

March, 2019

Shad Hartsough, Principal
Diane Hanes, Assistant Principal

Note from the Principal

March is a busy month for East Side. As we get ready for Spring, we also come to the realization that the school year is quickly fading away. At East Side we work to help develop the whole child. This includes trying to help students take ownership in their learning and to think and help others. There are a couple of activities that will allow them to help others.

At the beginning of the month we will be having our annual School Carnival. This is an exciting event for our students and families, and a time to have fun. The money raised through the event goes to support the children's learning here at East Side. Some items purchased in the past are Smart Boards, Ipads, gym equipment, classroom resources, recess equipment, courtyard shade sails, a new sign coming to East Side soon, and support of study trips or speakers to grade levels. We are looking to continue to support our playground and courtyard with money raised this year. Events like the Carnival are only possible through the efforts of our parents and staff. It takes a number of people to help make the event a success, and we hope that you are able to help out in donating, volunteering, or in any other capacity.

We work hard at East Side to provide a great education for your children. One thing we haven't always done is share the great accomplishments at East Side. East Side is one of only about 7 schools who have been designated "Family Friendly" from the State for 3 years in a row. This is a great accomplishment and one where we are happy to have received.

2018-2019 Yearbook

Yearbooks are for sale in the office for \$13. If you are paying by check, please make it out to Strawbridge Studios. If you are paying with cash, please make sure you have exact change.

Assessment Dates

As we start the new calendar year of 2019, we would like to remind Parents of 3rd and 4th grade students of some important dates. The following would be the dates as when State Assessments will be administered. Times have not been arranged yet. We would appreciate your help with not scheduling appointments during the school day for these dates. This just helps to create as much confidence/calmness for your child during the testing window. We understand illnesses can/will happen during this time. Please contact the school when your child is ill, just like always, so we can document in attendance.

IREAD for 3rd Grade: March 18 - March 29
lLearn 3rd and 4th Grade: April 22 - May 17

More information will follow as the testing windows approach. Thank you for your continued support

Classroom Attendance Award

We are tracking each classroom's attendance to see which class can win Best Attendance Award. The winning class each month will get to display the award outside the classroom and receive a prize. The award is based on the class that has the least amount of students missing school as well as coming late or leaving early for that month. Be looking next month to see which class wins!

We will recognize individual student each month that have perfect attendance starting with September. Students will receive a certificate. All students are excited to track their attendance as well as the class attendance. Thank you for helping us to teach the students that being at school and being on time is a life skill that will carry over and help when they have their own job.

Best Class Attendance for the month of January:
1st Place: Mrs. Brown's Class
2nd Place: Mrs. Scheiwe's Class & Mrs. Strieby's Class
3rd Place: Mrs. Borden's Class

Upcoming Events	
March 1	Spring Carnival Game Ticket Sales
March 2	Spring Carnival 2-5 pm
March 6	Spring Pictures
March 19	PTO Meeting @ 6 pm

ARRIVAL AND DISMISSAL TIMES East Side has new dismissal times

MONDAY, WEDNESDAY, THURSDAY, FRIDAY:

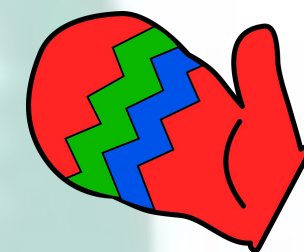
8:25am - Building open for student drop off
8:50am - school starts

TUESDAY: (Late arrival day)

8:55am - Building open for student drop off
9:20am - School begins

DISMISSAL: 3:40pm (new time) - every day

*BUS TIMES - you can find a students pick up or drop off time from our website. Click on Quick Links at top of page, then Bus Routes. Please have your student out 5 minutes early for morning pick up. Remember, bus times are approximate, especially the first few days.



Outdoor Recess

Important reminder: Your students will be going out to recess EVERY DAY unless the temperature/wind chill outside is 15 degrees or below. PLEASE make sure your kids come to school with hats, gloves and winter coats. NO EXCEPTIONS will be made.